



Certificate of Analysis

Industrial Hemp

Powered by Confident Cannabis
1 of 3

Sample: 1909CH0721.2528

Strain: Bubblegum

Batch#: ; Batch Size: g

Sample Received: 09/23/2019; Report Created: 10/03/2019; Expires: 10/03/2020

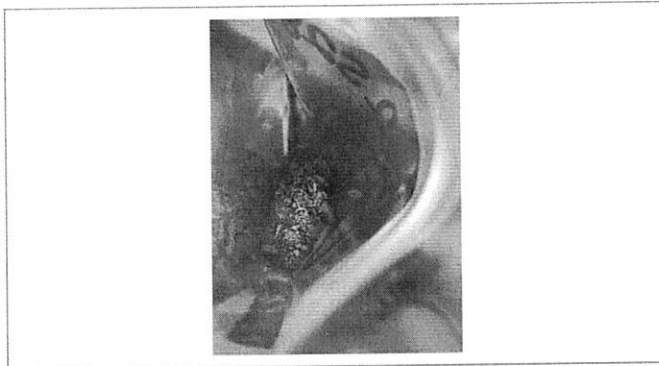
Harvest/Production Date:

Sampling: Random; Environment: Room Temp

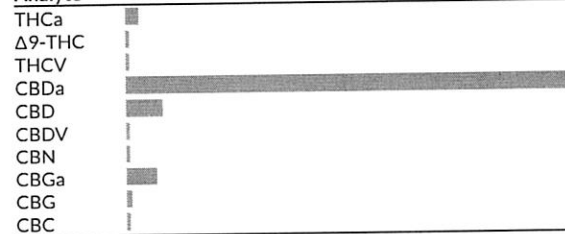
Bubblegum

Plant, Flower - Cured

Harvest Process Lot: ; METRC Batch: ; METRC Sample:



Analyte



Cannabinoids

544 HPLC3 20191002-4
10/02/2019

1 Serving = , g
servings/container,

Pass

0.18% Δ9-THC	17.52% Total CBD** (Calculated Decarboxylated Potential)
----------------------------	---

Analyte	LOQ mg/g	Mass %	Mass mg/g
THCa		0.59	5.9
Δ9-THC		0.18	1.8
THCV		0.01	0.1
CBDa		18.23	182.3
CBD		1.54	15.4
CBDV		0.05	0.5
CBN		0.01	0.1
CBGa		1.30	13.0
CBG		0.21	2.1
CBC		0.13	1.3
Total		22.24	222.4

22.24% Total Cannabinoids Analyzed	8.3% Moisture
--	-----------------------------

Method: CH SOP 400

*Total THC = THCa * 0.877 + d9-THC. **Total CBD = CBDa * 0.877 + CBD. LOQ = Limit of Quantification; NR = Not Reported; ND = Not Detected



5691 SE International Way B
Portland, OR
(503) 305-5252
<http://chemhistory.com>
Lic# OLCC 010-1002015CA5E ORELAP 4057

Douglas Duncan
Laboratory Director

Confident Cannabis
All Rights Reserved
support@confidentcannabis.com
(866) 506-5866
www.confidentcannabis.com



Values reported relate only to the product tested. ChemHistory makes no claims as to the consumer safety or other risks associated with any detected or non-detected levels of any pesticides or residual solvents. This Certificate shall not be reproduced except in full, without the written approval of ChemHistory. ORELAP accredited ID#4057 and OLCC Licensed Cannabis Testing Laboratory #010-1002015CA5E.



Certificate of Analysis

Sample provided to the laboratory by the client and tested as received.

Powered by Confident Cannabis
2 of 3

Sample: 1909CH0721.2528

Strain: Bubblegum

Batch#: ; Batch Size: g

Sample Received: 09/23/2019; Report Created: 10/03/2019; Expires: 10/03/2020

Harvest/Production Date:

Sampling: Random; Environment: Room Temp

Bubblegum Plant, Flower - Cured

Harvest Process Lot: ; METRC Batch: ; METRC Sample:



Terpenes

559 GCFID1 20191002-1
10/02/2019

Analyte	Mass	Mass	LOQ	
	%	mg/g	%	
cis-Phytol	<LOQ	<LOQ	0.02	
Valencene	0.03	0.3	0.02	
Sabinene	<LOQ	<LOQ	0.02	
Ocimene 1	<LOQ	<LOQ	0.02	
Geraniol	<LOQ	<LOQ	0.02	
Neral	<LOQ	<LOQ	0.02	
α-Humulene	0.14	1.4	0.02	
α-Terpinene	<LOQ	<LOQ	0.02	
trans-Phytol	0.11	1.1	0.02	
Caryophyllene Oxide	0.05	0.5	0.02	
(-) -β-Pinene	0.03	0.3	0.02	
α-Pinene	0.07	0.7	0.02	
Camphor	<LOQ	<LOQ	0.02	
(-) -α-Bisabolol	0.26	2.6	0.02	
α-Cedrene	<LOQ	<LOQ	0.02	
Terpinolene	<LOQ	<LOQ	0.02	
Endo-Fenchyl Alcohol	<LOQ	<LOQ	0.02	
p-Isopropyltoluene	<LOQ	<LOQ	0.02	
Azulene	<LOQ	<LOQ	0.02	
α-Terpineol	<LOQ	<LOQ	0.02	
Cedrol	0.13	1.3	0.02	
Citral	<LOQ	<LOQ	0.02	
(-) -Guaio	<LOQ	<LOQ	0.02	
β-Nerolidol	0.25	2.5	0.02	
Linalool	<LOQ	<LOQ	0.02	
Neryl Acetate	<LOQ	<LOQ	0.02	

Analyte	Mass	Mass	LOQ	
	%	mg/g	%	
β-Myrcene	0.26	2.6	0.02	
γ-Terpinene	<LOQ	<LOQ	0.02	
Anisole	<LOQ	<LOQ	0.02	
Fenchone	<LOQ	<LOQ	0.07	
Isoborneol	<LOQ	<LOQ	0.02	
δ-Limonene	0.04	0.4	0.02	
Ocimene 2	0.04	0.4	0.02	
Camphene	<LOQ	<LOQ	0.02	
α-Phellandrene	<LOQ	<LOQ	0.02	
γ-Terpineol	<LOQ	<LOQ	0.04	
Geranyl Acetate	<LOQ	<LOQ	0.18	
β-Caryophyllene	0.26	2.6	0.02	
Sabinene Hydrate	<LOQ	<LOQ	0.02	
Farnesene	0.03	0.3	0.02	
Nerol	<LOQ	<LOQ	0.02	
trans-Nerolidol	0.04	0.4	0.02	
Borneol	<LOQ	<LOQ	0.02	
Hexahydro Thymol	<LOQ	<LOQ	0.02	
Squalene	0.02	0.2	0.02	
δ-3-Carene	<LOQ	<LOQ	0.02	
Eucalyptol	<LOQ	<LOQ	0.02	
Eugenol	<LOQ	<LOQ	0.02	
(-) -Isopulegol	<LOQ	<LOQ	0.02	
Pulegone	<LOQ	<LOQ	0.02	
cis-Nerolidol	<LOQ	<LOQ	0.02	

Primary Aromas

1.76% Total Terpenes	 Cinnamon	 Hops	 Chamomile	 Orange	 Wood
-------------------------	--------------	----------	---------------	------------	----------

Method: GC-FID CH SOP 401; based on dry weight; LOQ = Limit of Quantification; NR = Not Reported; ND = Not Detected



5691 SE International Way B
Portland, OR
(503) 305-5252
<http://chemhistory.com>
Lic# OLCC 010-1002015CA5E ORELAP 4057

Douglas Duncan

Douglas Duncan
Laboratory Director

Confident Cannabis
All Rights Reserved
support@confidentcannabis.com
(866) 506-5866
www.confidentcannabis.com



Values reported relate only to the product tested. ChemHistory makes no claims as to the consumer safety or other risks associated with any detected or non-detected levels of any pesticides or residual solvents. This Certificate shall not be reproduced except in full, without the written approval of ChemHistory. ORELAP accredited ID#4057 and OLCC Licensed Cannabis Testing Laboratory #010-1002015CA5E.



Certificate of Analysis

Sample provided to the laboratory by the client and tested as received.

Powered by Confident Cannabis
3 of 3

Sample: 1909CH0721.2528

Strain: Bubblegum

Batch#: ; Batch Size: g

Sample Received: 09/23/2019; Report Created: 10/03/2019; Expires: 10/03/2020

Harvest/Production Date:

Sampling: Random; Environment: Room Temp

Bubblegum

Plant, Flower - Cured

Harvest Process Lot: ; METRC Batch: ; METRC Sample:



Moisture

Pass

10/02/2019

8.3%

Moisture



5691 SE International Way B
Portland, OR
(503) 305-5252
<http://chemhistory.com>
Lic# OLCC 010-1002015CA5E ORELAP 4057

Douglas Duncan
Laboratory Director

Confident Cannabis
All Rights Reserved
support@confidentcannabis.com
(866) 506-5866
www.confidentcannabis.com



Values reported relate only to the product tested. ChemHistory makes no claims as to the consumer safety or other risks associated with any detected or non-detected levels of any pesticides or residual solvents. This Certificate shall not be reproduced except in full, without the written approval of ChemHistory. ORELAP accredited ID#4057 and OLCC Licensed Cannabis Testing Laboratory #010-1002015CA5E.